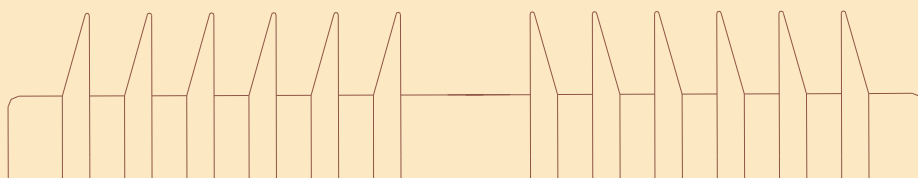




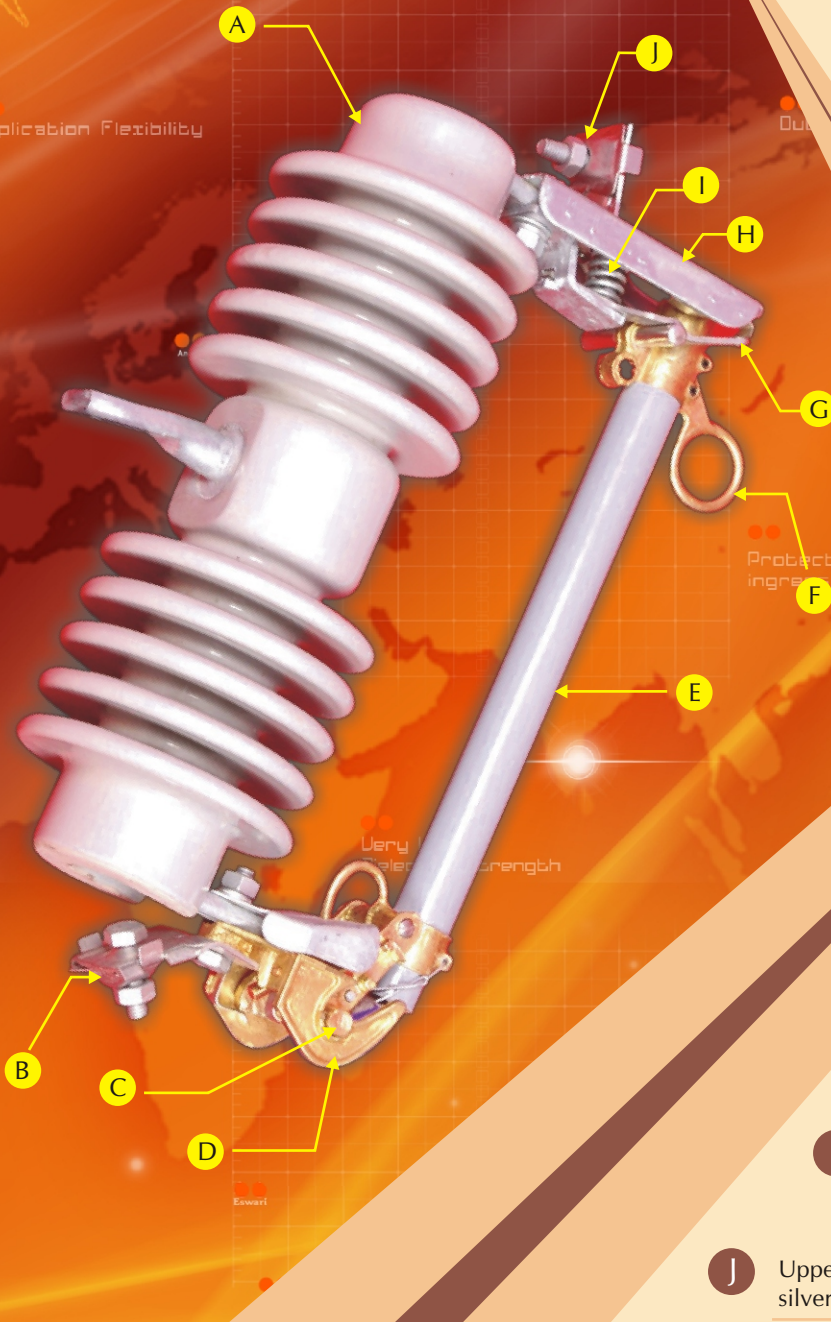
Eswari's Expulsion Fuse Cutouts
DDLO



Application Flexibility

Protection of ingress of moisture

Very High Dielectric Strength



- A** Porcelain Insulator
- B** Lower eye bolt connector in silver plated Brass
- C** Lower contact - (Trunnion) Silver Plated
- D** Crank Shaft support
- E** Fuse Holder
- F** Provision for hook stick
- G** Upper contact - Silver Plated
- H** Galvanized steel Channel
- I** Stain less steel spring provides toggle action ejection of the fuse holder
- J** Upper eye bolt connector in silver plated Brass

Fuse Cutouts

ESWARI'S EXPULSION CUTOUT - NGTK provides safe, reliable overcurrent protection to the industrial applications. The NGTK cutouts design will give a perfect protection for the industrial equipments from system overloads and under other fault conditions.

Salient features

- # Resistance to ageing
- # U.V Retardant
- # Very High Dielectric Strength
- # Protection of ingress of moisture
- # Application Flexibility
- # Trouble free operation
- # Outstanding performance

Applications

Eswari's Expulsion Fuse Cutouts (DDLO) which fused with Eswari's fuse links provides a wide range of protection for over head distribution systems rated from 10 kV to 36 kV. Eswari's Expulsion Fuse Cutouts (DDLO) will interrupt all fault from the lowest current that will melt the fuse links to the maximum rated breaking current. Eswari's Expulsion Fuse Cutout will accommodate standard or removable button head type fuse links from 1 A to 200 A. The selection of appropriate fuse links depends on type and rating for a particular application as a function of Load Current, type of equipment and the required co-ordination with other over current protective equipment.

Standards & Design Testing

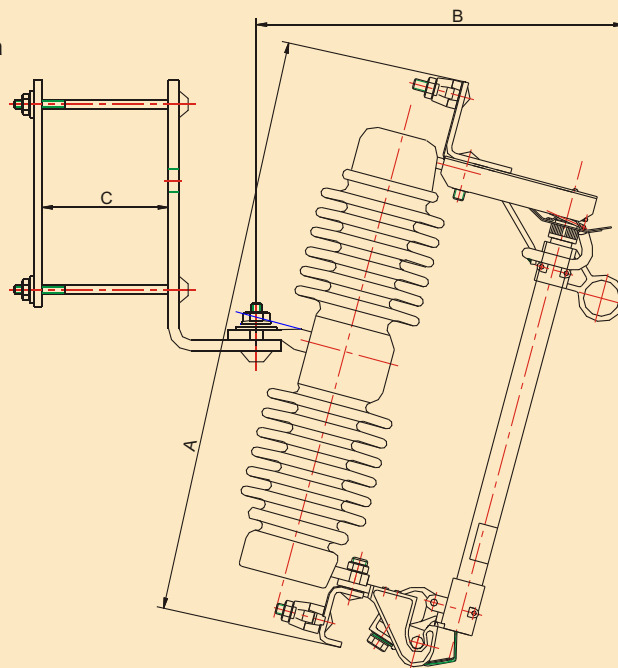
- # IS - 9385 - 2
- # IEC 60282 - 2
- # NEMA SG-2-1986
- # ANSI C37.41.1994
- # ANSI C37.42-1989

Ratings

- # The Rating of the Eswari's Expulsion Fuse Cutouts (DDLO) is expressed in terms of voltage & current rating.
- # Standard voltage rating are maintained between 11/12 kV, 22/24 kV and 33/36 kV.
- # The fuse cutouts are capable of carries a maximum current of 100A and 200A.

Dimensional Drawings

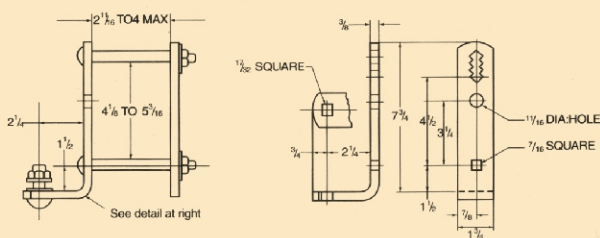
for Porcelain Series



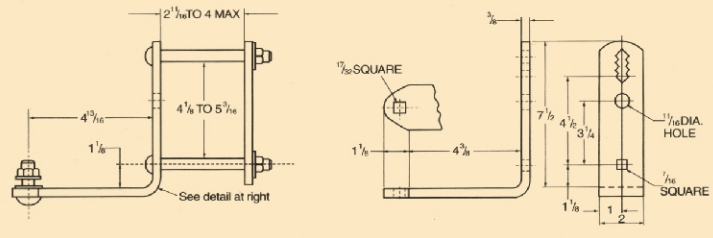
Note : Refer Technical Table for dimensions

Dimensional Details

for Mounting Brackets



NEMA Type B Mounting Bracket-Adjustable for 3" x 4" to 4" x 5" Cross arm



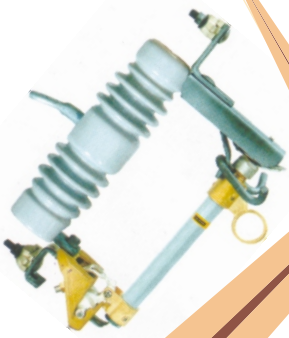
Extended Mounting Bracket-Adjustable for 3" x 4" to 4" x 5" Cross arm

EXP Cutout

NGT-K

Porcelain Series

10KV - 15KV



27KV - 33KV



33KV - 36KV



Technical Data

Rated Voltage (kV)	Rated Current (A)	Rated Breaking Current (kA)	Basic Impulse Voltage level(kV)		Power frequency Withstand Voltage(kV)		Leakage distance (mm)	Weight (kg)	Dimension A x B x C (cm)
			Across isolating distance	Between earth and poles	Across isolating distance	Between earth and poles			
11/12	100	10	85	75	32	28	250	7.3	40 x 34.5 x 10.5
	200	10	85	75	32	28	250	7.3	40 x 34.5 x 10.5
22/24	100	10	145	125	60	50	530	12.0	48 x 34.5 x 14.0
	200	10	145	125	60	50	530	12.0	48 x 34.5 x 14.0
33/36	100	10	195	170	80	70	720	15.5	65 x 38 x 14.5
	200	10	195	170	80	70	720	15.5	65 x 38 x 14.5

EXP Cutout

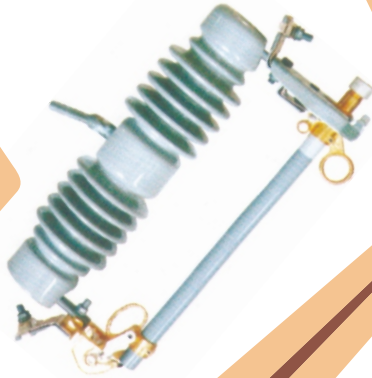
NGT-KA

Porcelain Series

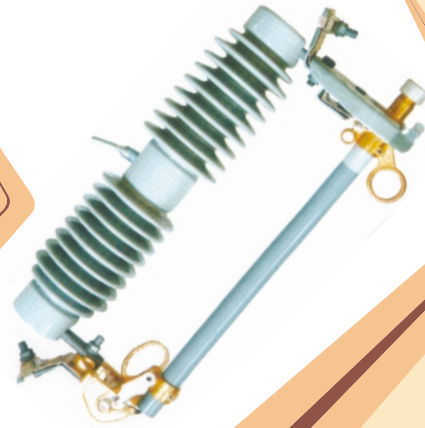
10 kV - 15 kV



15 kV - 27 kV



33 kV - 36 kV



Technical Data

Rated Voltage (kV)	Rated Current (A)	Rated Breaking Current (kA)	Basic Impulse Voltage level(kV)		Power frequency Withstand Voltage(kV)		Leakage distance (mm)	Weight (kg)	Dimension A x B x C (cm)
			Across isolating distance	Between earth and poles	Across isolating distance	Between earth and poles			
11/12	100	10	85	75	32	28	250	7.3	39.5 x 36.5 x 10.5
	200	10	85	75	32	28	250	7.3	39.5 x 36.5 x 10.5
22/24	100	10	145	125	60	50	530	12.0	49 x 36.5 x 14.0
	200	10	145	125	60	50	530	12.0	49 x 36.5 x 14.0
33/36	100	10	195	170	80	70	720	15.5	65 x 40 x 14.5
	200	10	195	170	80	70	720	15.5	65 x 40 x 14.5

EXP Cutout

NGT-KP

Polymeric Series

10 kV - 15 kV (a)



10 kV - 15 kV (b)



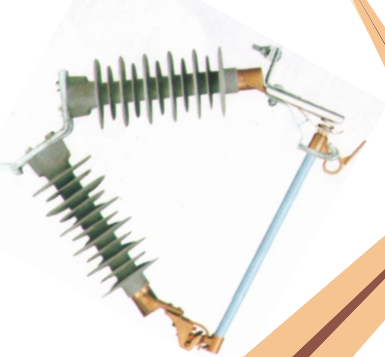
24 kV - 27 kV



Technical Data

Rated Voltage (kV)	Rated Current (A)	Rated Breaking Current (kA)	Basic Impulse Voltage level(kV)		Power frequency Withstand Voltage(kV)		Leakage distance (mm)	Weight (kg)	Dimensions A x B x C (cm)
			Across isolating distance	Between earth & poles	Across isolating distance	Between earth & poles			
10/15 (a)	100	10	110	95	45	38	380	7.3	45.5 x 35.5 x10.5
	200	10	110	95	45	38	380	7.3	45.5 x 35.5 x10.5
10/15 (b)	100	10	110	95	45	38	380	7.3	45.5 x 35.5 x10.5
	200	10	110	95	45	38	380	7.3	45.5 x 35.5 x10.5
24 -27	100	10	145	125	60	50	560	-	-
	200	10	145	125	60	50	560	-	-
27 -33 (a)	100	10	145	125	60	50	620	10.0	49.5 x 35.0 x14.0
	200	10	145	125	60	50	620	10.0	49.5 x 35.0 x14.0
27 -33 (b)	100	10	195	170	80	70	1070	-	-
	200	10	195	170	80	70	1070	-	-
33/36	100	10	195	170	80	70	720	15.5	65.0 x 38.5 x14.5
	200	10	195	170	80	70	720	15.5	65.0 x 38.5 x14.5

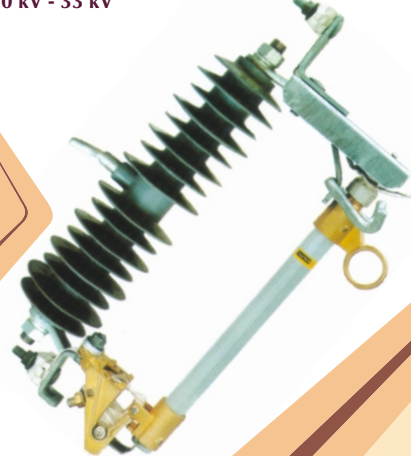
27 kV - 33 kV (b)



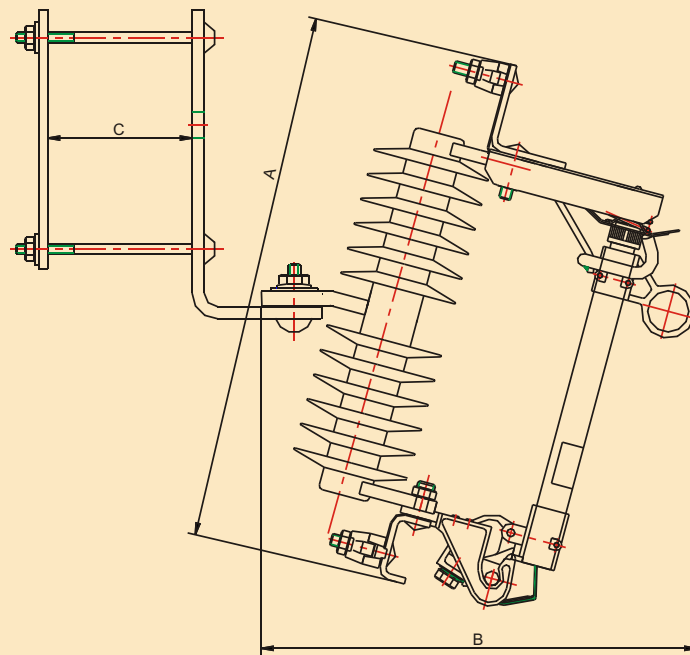
27 kV - 33 kV (a)



30 kV - 33 kV



Dimensional Drawings for Polymeric Series



EXP Cutout **HookStick** Polymeric Series

Eswari's HookStick is first attached to a universal pole atleast six feet long. It is then positioned across the front of the NGT K Cutout, with the HookStick anchor hung on the attachment hook on the far side of the cutout. The pull ring of the fuse tube or disconnect blade is engaged with HookStick's pull-ring hook and held fast with HookStick's pull-ring latch. As the universal pole is pulled downward with a firm, steady stroke, and as HookStick is extended to its maximum length, the cutout is opened and the current is diverted through HookStick - at the same time HookStick's opening stroke, its internal trigger trips, the charged operating spring is released, the internal contact are separated, and the circuit is positively interrupted.





Cert. No. FM61782

